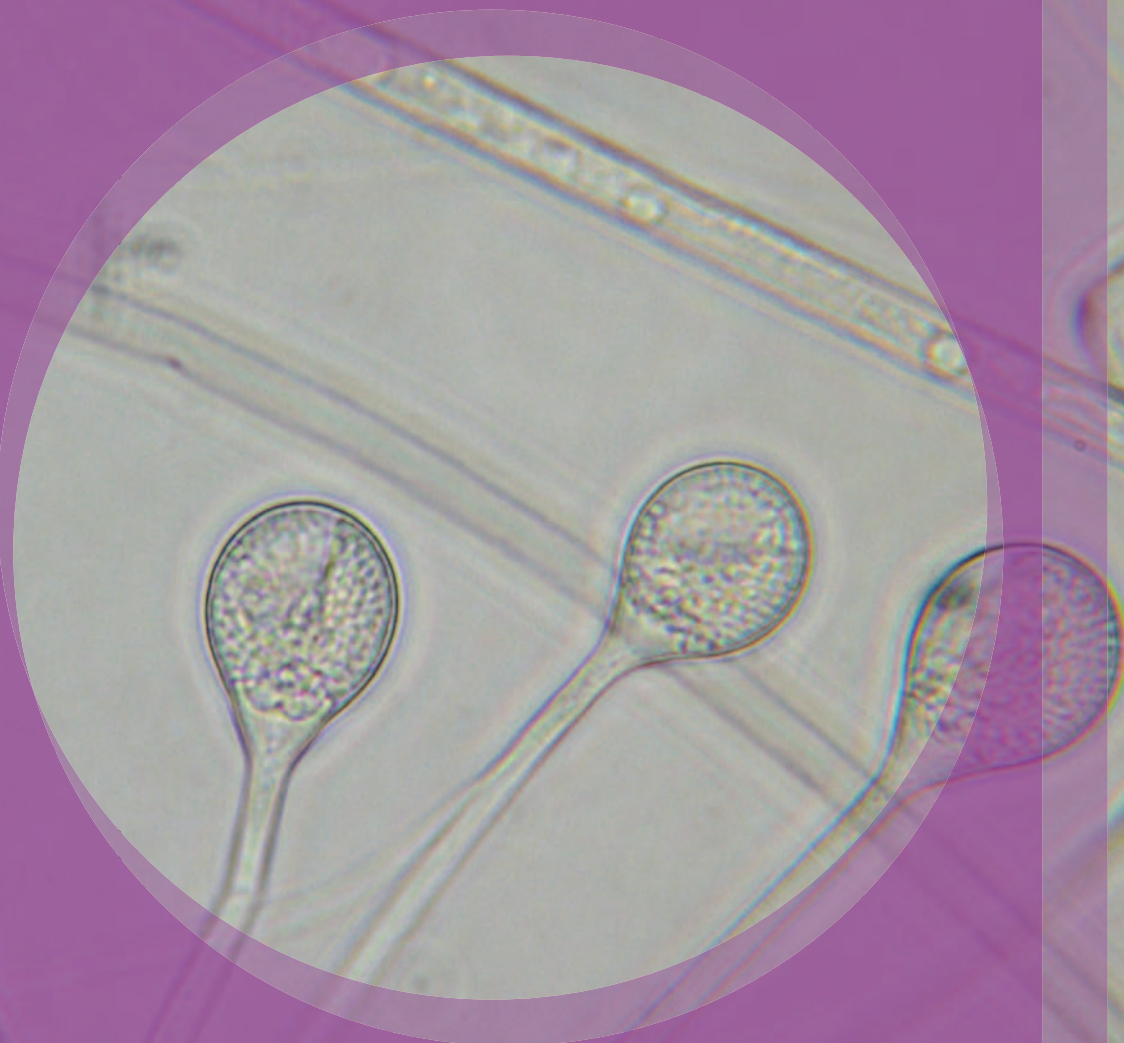


Absidia



Natural Habitats *Soil • Decaying vegetation*

Suitable Substrates in the Indoor Environment

Often found in stored grains • Other foods

Water Activity *Unknown*

Mode of Dissemination *Wind*

Allergenic Potential *Recognized as an allergen*

Potential Opportunist or Pathogen *In immunocompromised patients pulmonary invasions, the meninges (brain or spinal chord), and kidney infections can result from Absidia exposure • Absidia may also cause zygomycosis in immunocompromised patients (AIDS)*

Industrial Uses *Unknown*

Potential Toxins Produced *Unknown*

Other Comments *Absidia often causes food spoilage*



EMSL ANALYTICAL, INC.
www.emsl.com

LAB SERVICES: Asbestos, Mold, Bacteria, Industrial Hygiene, Metals, Allergens, PCR-Polymerase Chain Reaction (DNA), Silica, Volatiles Scan, Formaldehyde by HPLC, Water and Materials Testing.