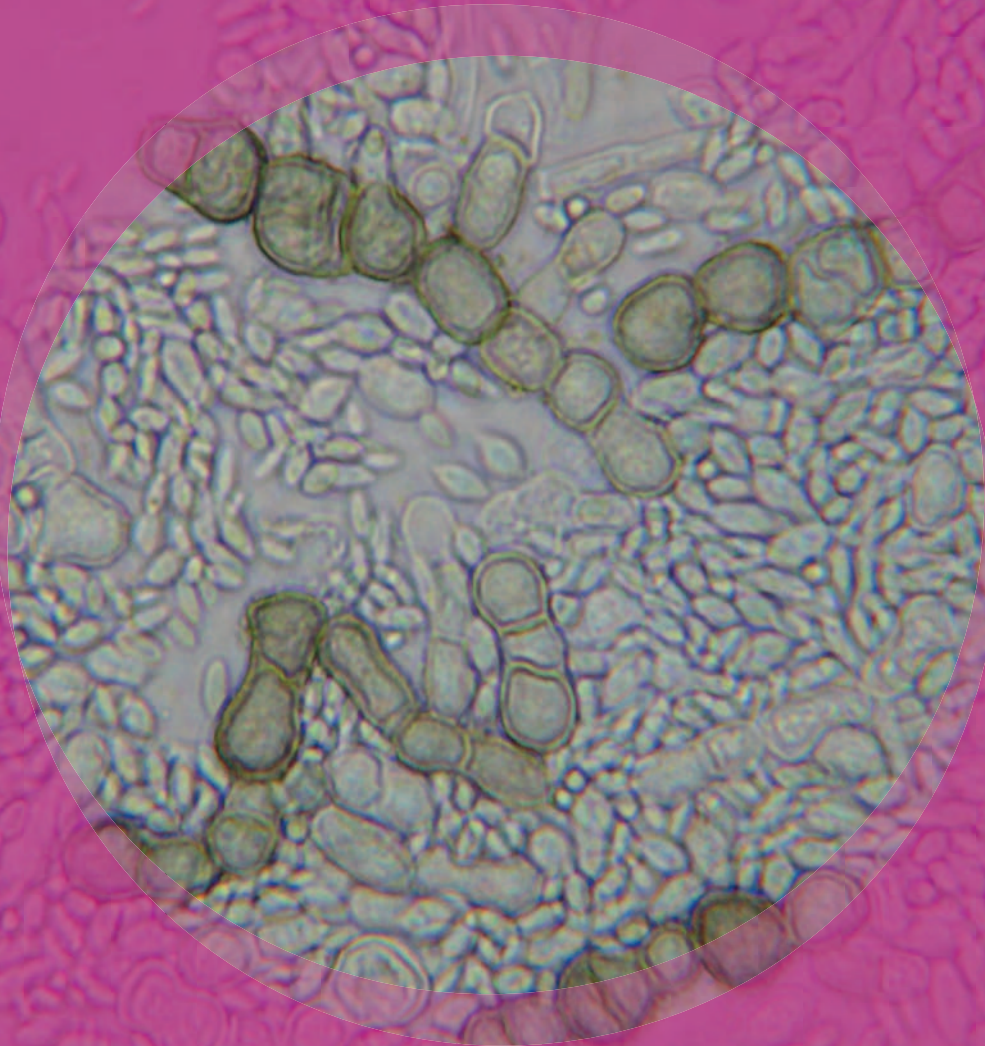


# Aureobasidium



EMSL ANALYTICAL, INC.  
www.emsl.com



**Natural Habitats** *Soils • Plant leaf and stem tissue • Wood • Fresh Water • Plant Debris*

**Suitable Substrates in the Indoor Environment** *Damp areas including kitchens, bathrooms, grout, and shower curtains • Painted interior surfaces and textiles • Skin and nails of people*

**Water Activity** *Grows well where moisture accumulates (88.5 RH on woodchip wallpaper)*

**Mode of Dissemination** *Water droplets, rain • Wind when spores become dry*

**Allergenic Potential** *Type I (asthma and hay fever) • Type III (hypersensitivity) • Skin irritant causing dermatitis*

**Potential Opportunist or Pathogen** *Keratomycosis • Phaeohyphomycosis • Pulmonary mycosis with sepsis*

**Industrial Uses** *A. pullulans produces pullulan which is used for packaging food and drugs.*

**Potential Toxins Produced** *Unknown*

**LAB SERVICES:** Asbestos, Mold, Bacteria, Industrial Hygiene, Metals, Allergens, PCR-Polymerase Chain Reaction (DNA), Silica, Volatiles Scan, Formaldehyde by HPLC, Water and Materials Testing.