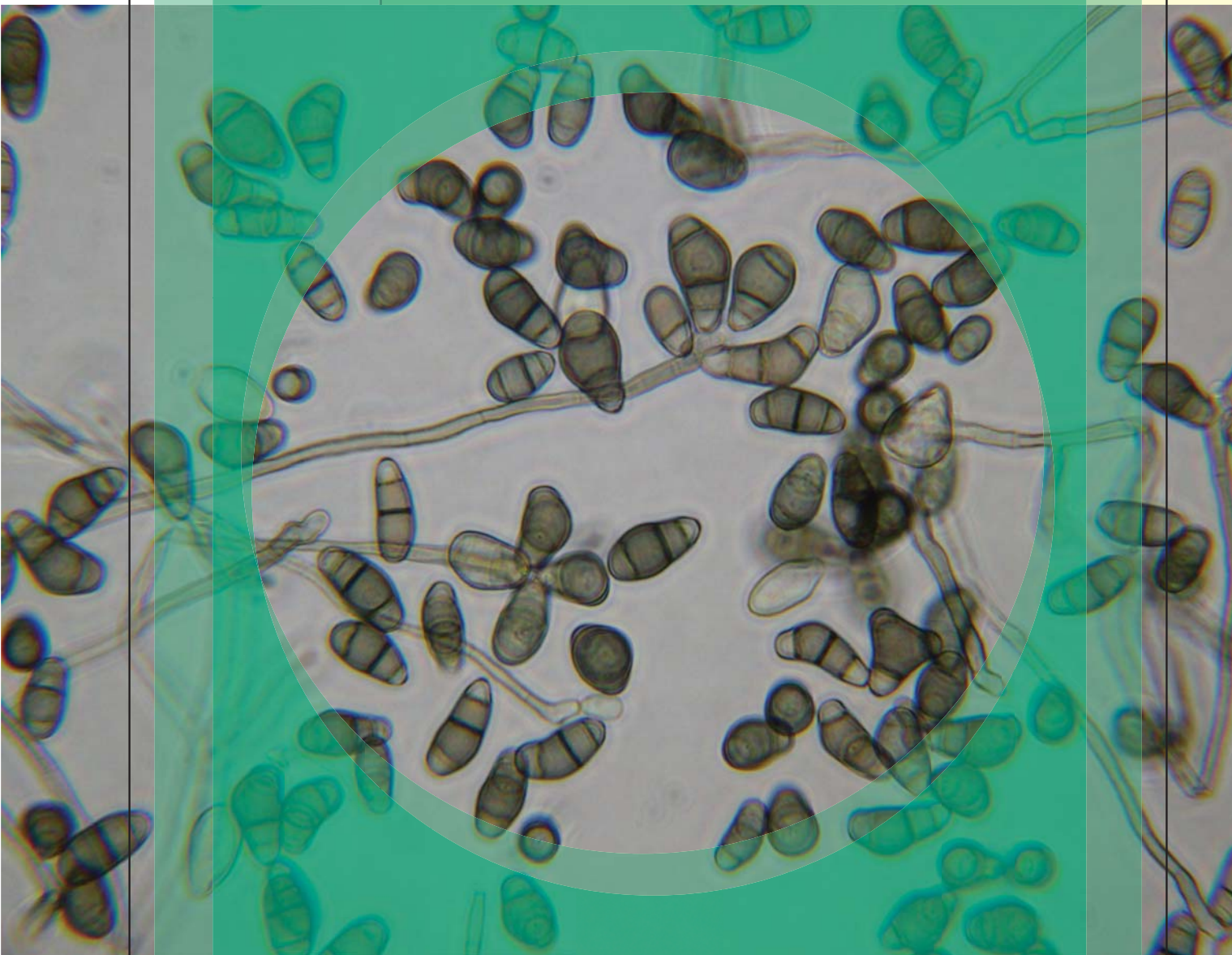


# Curvularia



**Natural Habitats** *Plant saprobe and pathogen to cereal plants • Soil*

**Suitable Substrates in the Indoor Environment**  
*Paper • Wood products*

**Water Activity** *Unknown*

**Mode of Dissemination** *Wind*

**Allergenic Potential** *Type I (asthma and hay fever) • A relatively common cause of allergic fungal sinusitis*

**Potential Opportunist or Pathogen** *In immunocompromised patients: Cerebral abscess • Endocarditis • Mycetoma • Ocular keratitis • onychomycosis • pneumonia • sinusitis*

**Industrial Uses** *Unknown*

**Potential Toxins Produced** *Cytochalasin B*



EMSL ANALYTICAL, INC.  
[www.emsl.com](http://www.emsl.com)

**LAB SERVICES:** Asbestos, Mold, Bacteria, Industrial Hygiene, Metals, Allergens, PCR-Polymerase Chain Reaction (DNA), Silica, Volatiles Scan, Formaldehyde by HPLC, Water and Materials Testing.