

Physical Testing:



EMSL ANALYTICAL, INC.

EMSL Analytical, Inc. is a full service analytical testing laboratory, which has been providing materials, forensic, industrial hygiene, indoor air quality, environmental, and chemical analysis services since 1981. Our experienced staff of PhD scientists, technical professionals and our continuously expanding roster of analytical instrumentation are increasingly called upon by clients to solve problems, answer questions, and respond to a wide spectrum of challenges from their customers, partners, and internal operations.

Our project scientists can design and implement a testing program that accomplishes your specific goals. We often function as “virtual resources” to our clients, complementing their own capabilities.

In addition, we have successfully provided failure analysis and comparative product performance evaluations for a wide range of clients. Our technologists work closely with your people to devise efficient and economic test strategies, methods, and matrices.

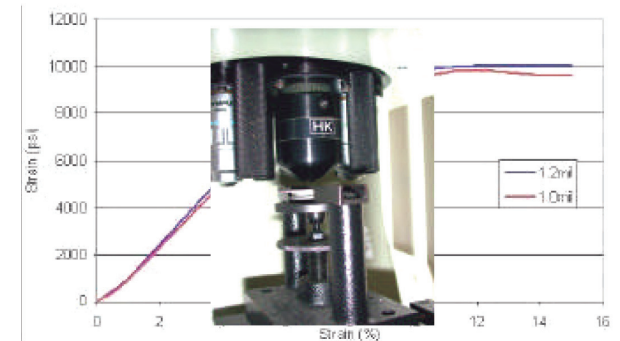
Contact the Materials Science Division at EMSL Analytical to turn our capabilities into effective solutions for your business.

Physical Testing Services:

- ◆ Tensile Strength
- ◆ Compressive Strength
- ◆ Flexural Strength
- ◆ Impact Fracture
- ◆ Hardness
 - ◆ Vickers
 - ◆ Knoop
 - ◆ Brinell
 - ◆ Rockwell
- ◆ Abrasion
 - ◆ Taber Rotary
 - ◆ Linear
- ◆ Effects of Heat, Humidity, and Solvents on products
- ◆ Environmental Studies
- ◆ Cross-sectioning and Polishing
- ◆ Fracture Analysis
- ◆ Parts Failure Testing & Analysis
- ◆ Grain Boundaries & Structure
- ◆ Metals / Alloy Identification
- ◆ Carbon Content
- ◆ Polymer and Ceramic Analysis
- ◆ Melting Point
- ◆ Flash Point
- ◆ Auto-ignition
- ◆ Thermo-gravimetric Analysis (TGA)
- ◆ Differential Scanning Calorimetry (DSC)
- ◆ X-Ray Diffraction Spectrometry (XRD)
- ◆ X-Ray Fluorescence Spectrometry (XRF)
- ◆ Scanning Electron Microscopy (SEM)
- ◆ ICP, GC-MS, HPLC and more... .

Testing Capabilities:

EMSL Analytical, Inc. can analyze your samples for everything from the common tensile and compression test to advanced deterioration studies. We routinely evaluate products for effectiveness during heat and humidity studies. Deterioration of structural integrity due to contact with moisture, solvents and physical damage are just a portion of the testing that can be performed by our experienced staff. Give us a call next time you have a dilemma to solve and let us put our collective experience & extensive abilities to work for you.



EMSL maintains an in-house machine shop in order to tailor make grips, holders and equipment for specialized parts and materials testing. We can produce any parts