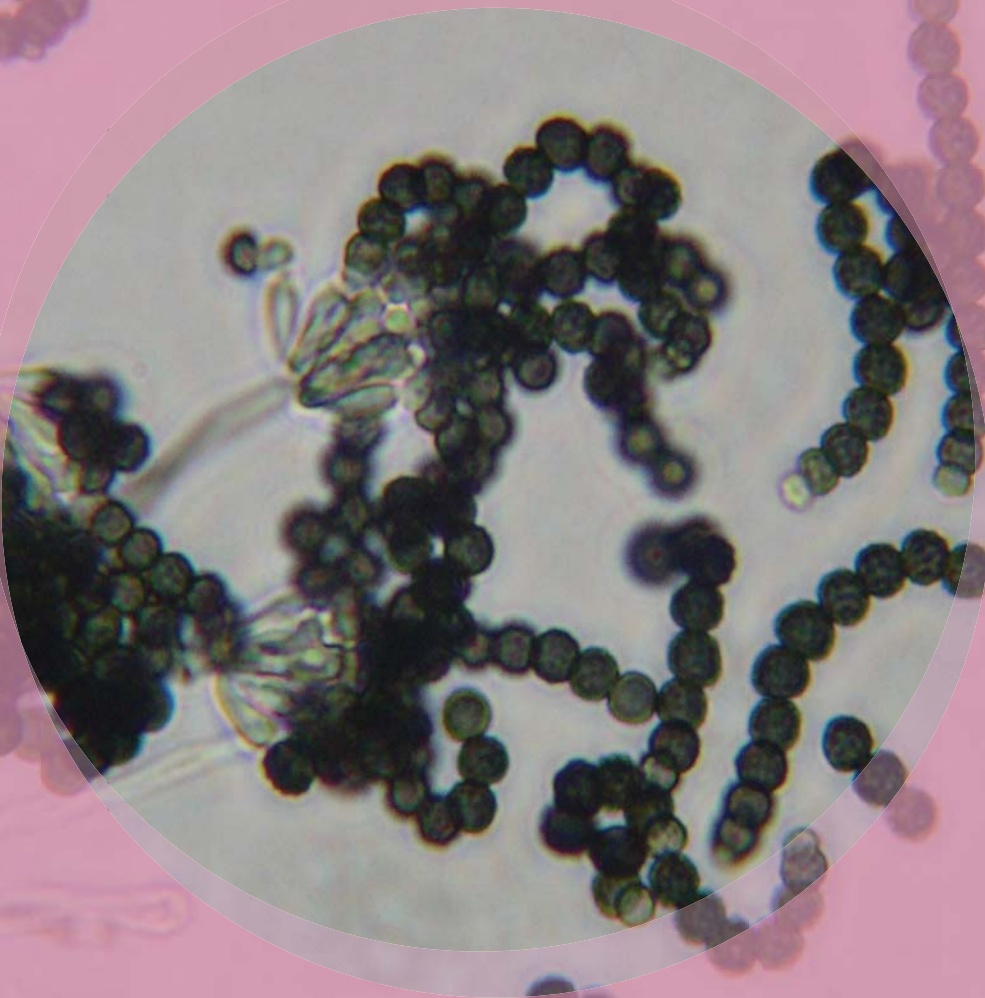


Memnoniella



EMSL ANALYTICAL, INC.
www.emsl.com



Natural Habitats *Plant materials • Soil*

Suitable Substrates in the Indoor Environment

Paper • Sheetrock • Wood

Water Activity *Suspected to be above 0.90 Aw*

Mode of Dissemination *Wind*

Allergenic Potential *Unknown*

Potential Opportunist or Pathogen *Unknown*

Potential Toxins Produced *Dechlorogriseofulvin*

Epidechlorogriseofulvin • Griseofulvins • Memnopeptide A

Trichodermol • Trichodermin.

Other Comments *Griseofulvin used as an anti-dermatophyte drug and is commercially available.*