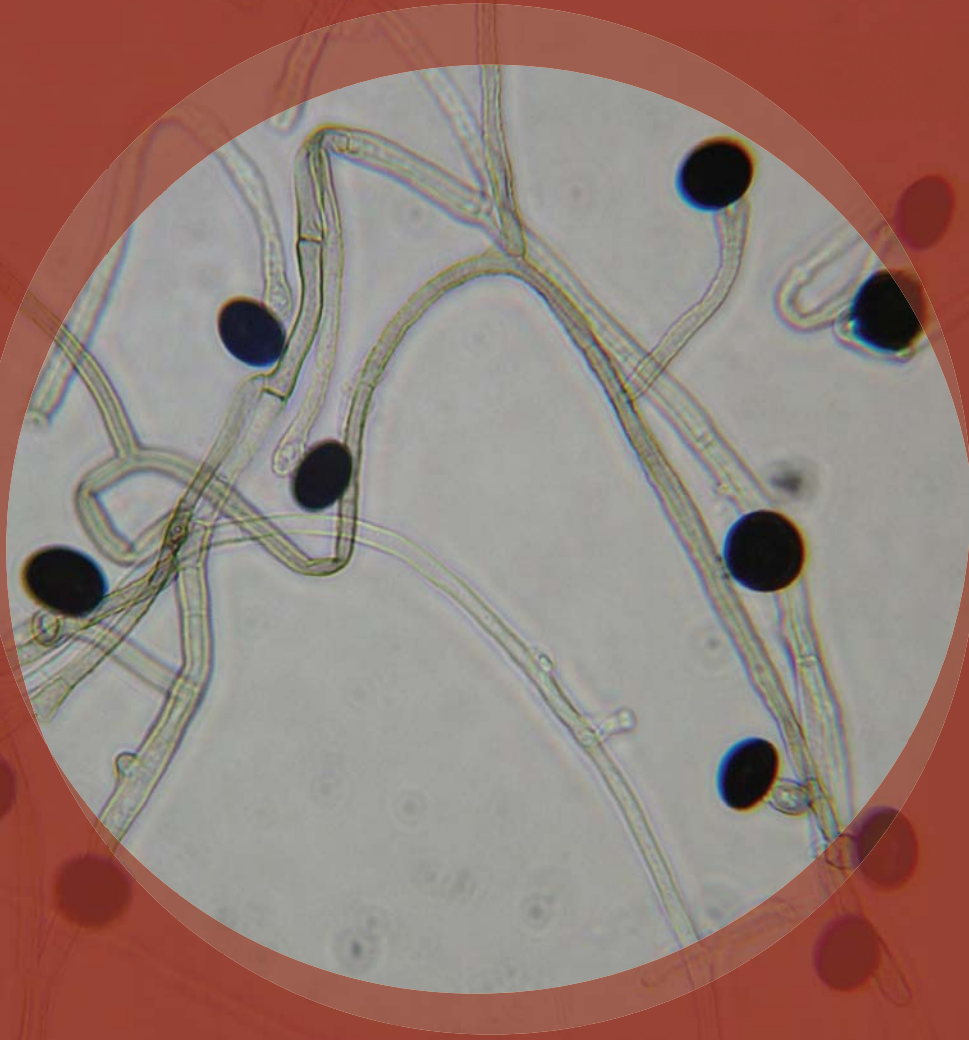


# Nigrospora



**Natural Habitats** *Common on live or dead grass • Seeds • Soil*

**Suitable Substrates in the Indoor Environment**  
*Unknown*

**Water Activity** *Unknown*

**Mode of Dissemination** *Forcibly ejected*

**Allergenic Potential** *Type I allergies (hay fever, asthma)*

**Potential Opportunist or Pathogen** *Keratitis • Skin lesions*

**Industrial Uses** *Unknown*

**Potential Toxins Produced** *Unknown metabolite reported with some toxic properties*



EMSL ANALYTICAL, INC.

[www.emsl.com](http://www.emsl.com)



**LAB SERVICES:** Asbestos, Mold, Bacteria, Industrial Hygiene, Metals, Allergens, PCR-Polymerase Chain Reaction (DNA), Silica, Volatiles Scan, Formaldehyde by HPLC, Water and Materials Testing.

107 HADDON AVE, WESTMONT NJ 08108 TEL: 800.220.3675