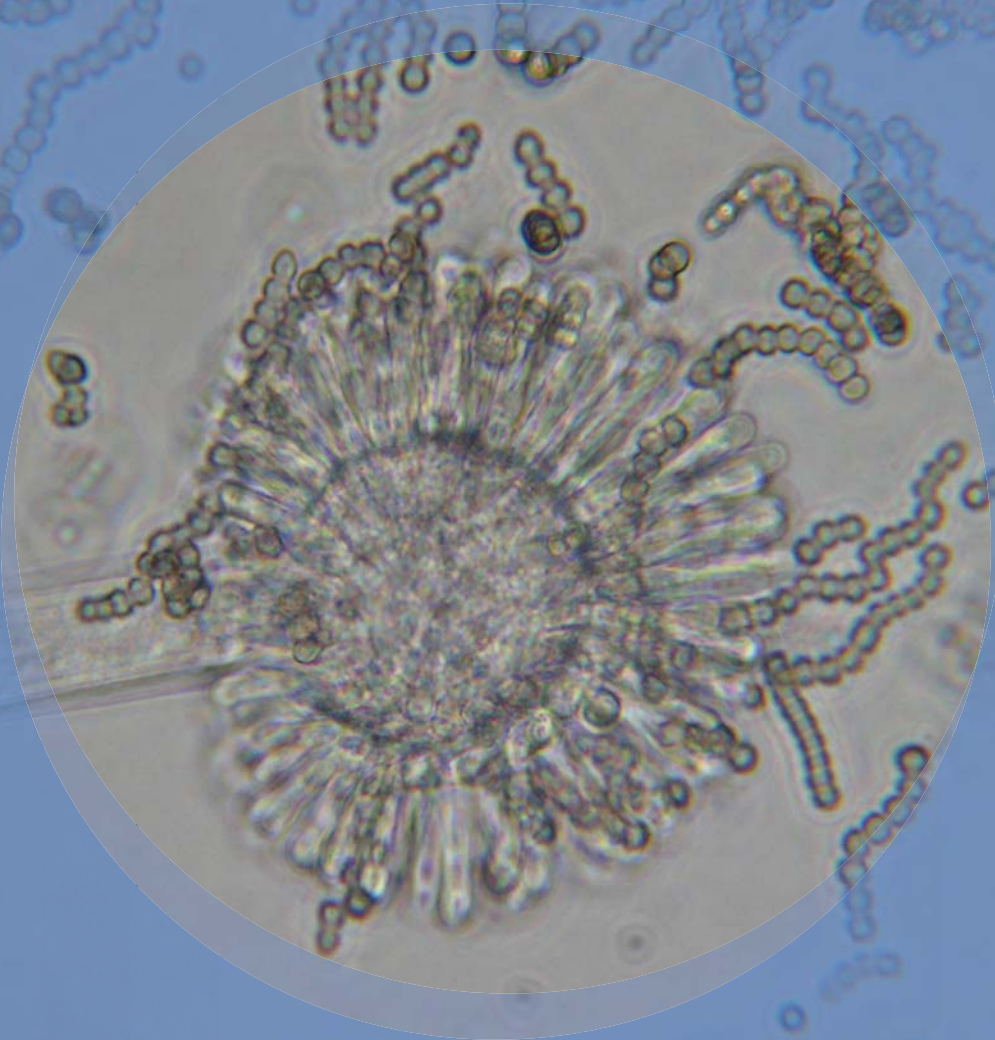


Syncephalastrum



EMSL ANALYTICAL, INC.
www.emsl.com



Natural Habitats *Dung • Soil*

Suitable Substrates in the Indoor Environment
Unknown

Water Activity *Unknown*

Mode of Dissemination *Unknown*

Allergenic Potential *Unknown*

Potential Opportunist or Pathogen *Cutaneous infections reported*

Industrial Uses *Unknown*

Potential Toxins Produced *Unknown*

LAB SERVICES: Asbestos, Mold, Bacteria, Industrial Hygiene, Metals, Allergens, PCR-Polymerase Chain Reaction (DNA), Silica, Volatiles Scan, Formaldehyde by HPLC, Water and Materials Testing.