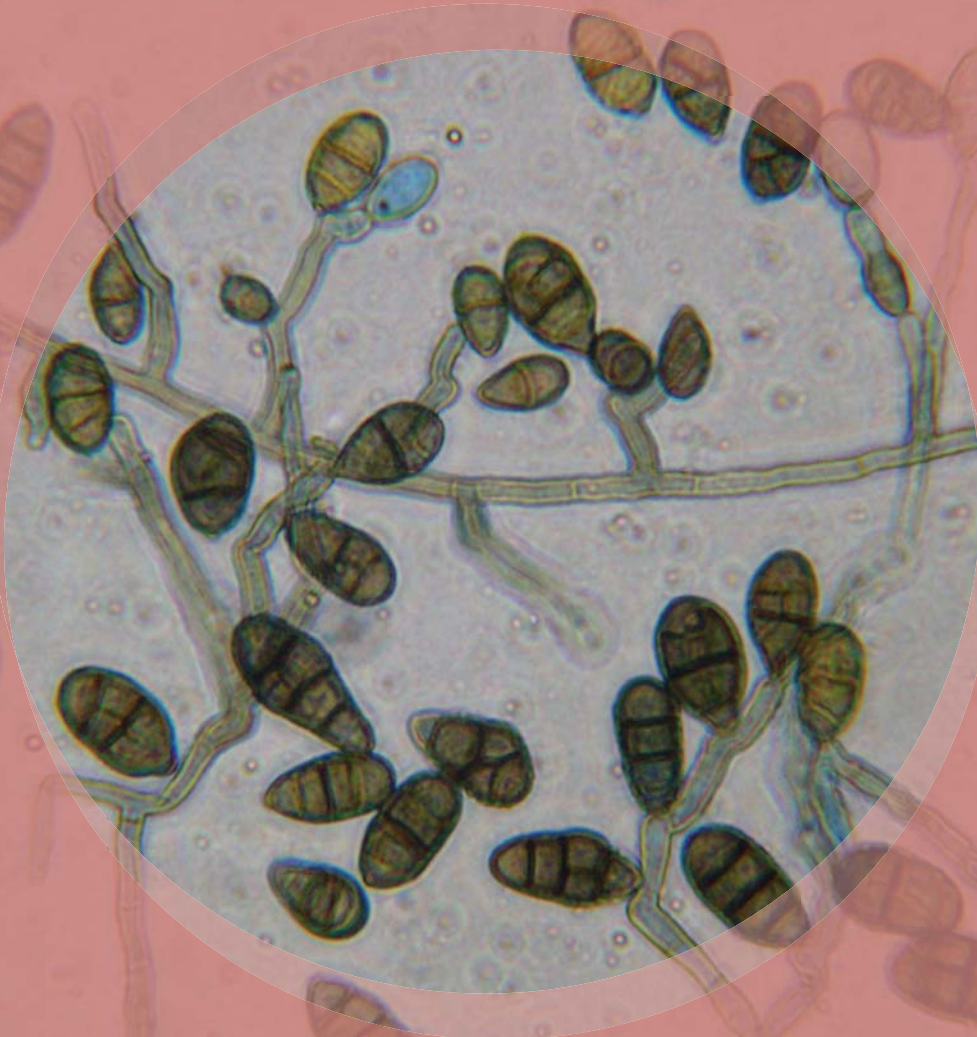


Ulocladium



Natural Habitats *Soil • Plant materials • Soil, dung, paint, grasses, fibers, wood, decaying plant material, paper, and textiles*

Suitable Substrates in the Indoor Environment *Gypsum board • Jute • Paper • Rotten wood • Textiles • Wood*

Water Activity *Aw=0.89*

Mode of Dissemination *Wind*

Allergenic Potential *Type I (hay fever, asthma)*

Potential Opportunist or Pathogen *Unknown*

Industrial Uses *Unknown*

Potential Toxins Produced *Unknown*

Other Comments *Alternaria sensitive allergy sufferers have a multiplied reaction when Ulocladium and Alternaria are present together*



EMSL ANALYTICAL, INC.
www.emsl.com



LAB SERVICES: Asbestos, Mold, Bacteria, Industrial Hygiene, Metals, Allergens, PCR-Polymerase Chain Reaction (DNA), Silica, Volatiles Scan, Formaldehyde by HPLC, Water and Materials Testing.